

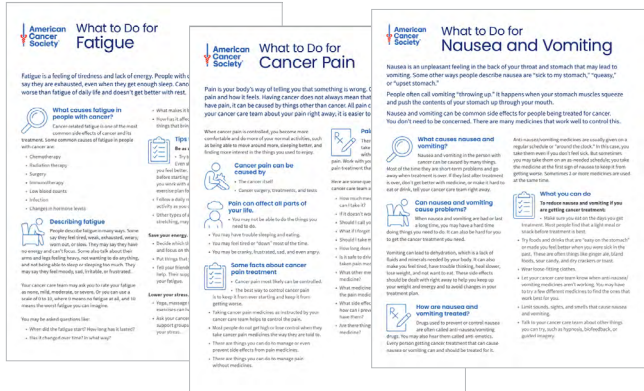
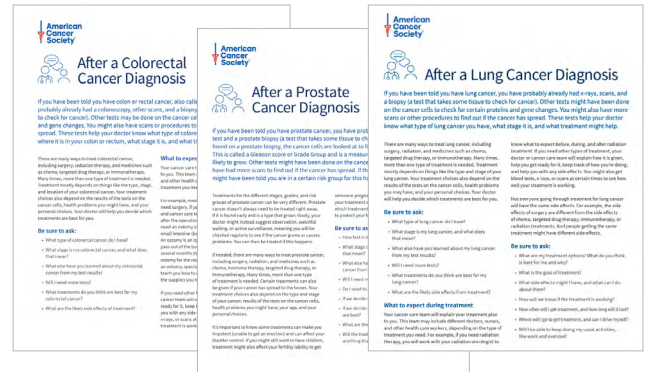


American Cancer Society Patient Education Materials Now Available in Epic

Patient education materials developed by the American Cancer Society are being integrated into Epic electronic health systems. These easy-to-read, simple guides will aid health systems in providing patients with cancer information about their diagnosis, symptom management, and more.

In the August 2024 version of Epic, the American Cancer Society After Diagnosis Series will be available for import. This series focuses on what patients can expect during and after treatment, questions to ask their health care team, and ways to stay physically active and cope with feelings. Content is available for [breast](#), [cervical](#), [colorectal](#), [lung](#), and [prostate](#) cancer.

All materials will be available in English, Spanish, Hindi, Tagalog, Chinese, Arabic, Vietnamese, Korean, Portuguese, French, Russian, Polish, Haitian Creole, and Ukrainian.



Future versions of Epic will include the American Cancer Society Symptom Management Series, which provides information about 13 common cancer treatment symptoms, including [nausea and vomiting](#), [fatigue](#), [hair loss](#), and [pain](#). This series covers what causes the symptoms, how to manage them, why it is important to address these symptoms, and questions to ask the health care team.

This content is part of the Epic Foundation System and is only available via Content Management Series. Once imported you will receive updates automatically for your version of Epic as the content is updated in Foundation System. Reach out to your Beacon IT team and mention Nova Release Note 885002 to get the content. If you encounter any issues have your Beacon IT team reach out to their Epic Technical Services representative for help.

For more patient education materials, visit cancer.org/hcp