

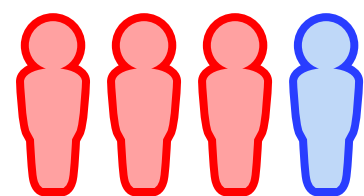
Nā Mana‘o Kū‘ikena Ma‘i ‘A‘ai o ka po‘e ‘Ākia ‘Amelika, nā ‘Ōiwi Hawai‘i a me ka Po‘e o ka Pākīpika.

ā Mana‘o Kū‘ikena Ma‘i ‘A‘ai o ka ‘Ahahui Ma‘i ‘A‘ai ‘Amelika a me ka huahelu no ka po‘e ‘Ākia ‘Amelika, Ka po‘e ‘Ōiwi Hawai‘i a me ka Po‘e o ka Pākīpika, 2024-2026.

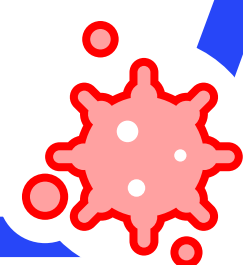


Ke ho‘okūkū ‘ia me ka po‘e haole, ‘o ka pākēneka make ma waena o ka po‘e ‘Ōiwi Hawai‘i a me nā haole, ‘o ia ho‘i he:

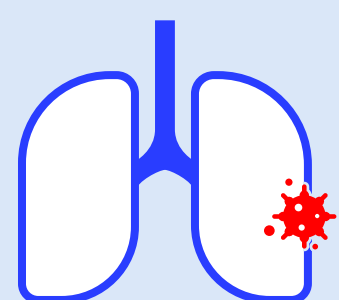
75% a ‘oi me ka ma‘i ‘a‘ai ake



2.5-3.3 a ‘oi he ma‘i ‘a‘ai o ka ma‘i wahine, ma ka ‘ōpū, a ma ke ‘eke mimi.

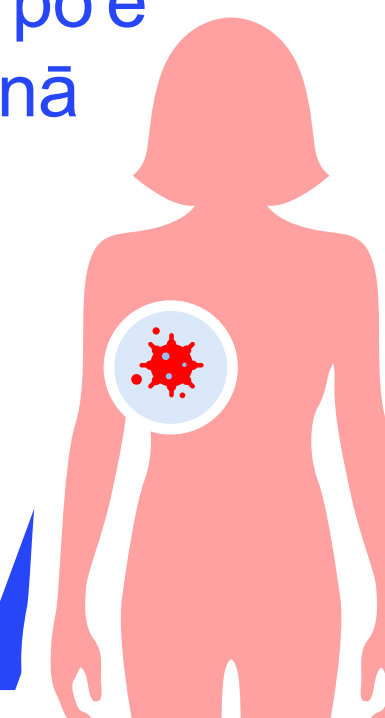


‘O ka ma‘i ‘a‘ai ke kumu nui loa i ‘ike ‘ia ai ka make ‘ana o ka po‘e Pākē, ka po‘e Pilipino, ka po‘e Wiekanaama, a me ka po‘e Kōlea



‘O ka ma‘i ‘a‘ai akemāmā ke kumu nui e make ai nā kāne ma nā ‘ohana ‘Ākia ‘Amelika a me ka lāhui ‘Ōiwi Hawai‘i a ma waena o nā ‘Ōiwi o ka Pākīpika.

Ua ‘alawa ‘ia ma kahi o 50% o nā wāhine Kāmoa, Tonga, Laosa, Guama, Hmong, a i ‘ole Pakitana a ‘ike ‘ia ka ma‘i ‘a‘ai waiū ma nā pae ma‘i kupu ma mua o ka po‘e wāhine haole he 68% a me nā wāhine Kepanī he 73%.



E nānā i ka hō‘ike piha ma cancer.org/ACS-AANHPI-2024